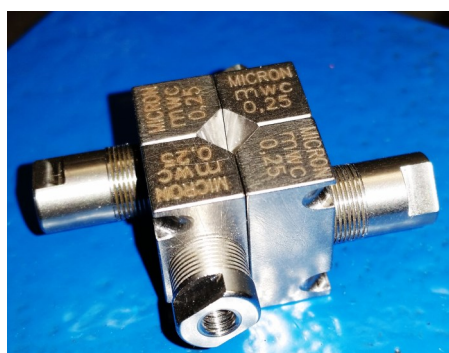
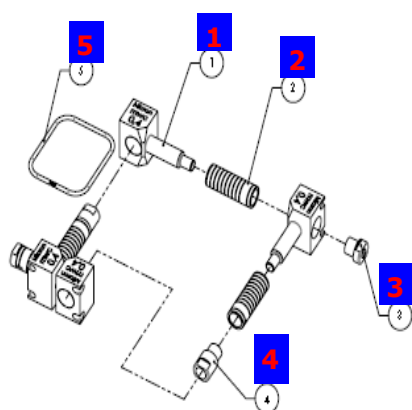


**Filiere di Smaltatura regolabili per
Piattine sez. max 36 mmq (W max 12)
Adjustable tools for Enamelling flat wires
max cross sect. 36 sqmm (W max 12)**

*4 elementi separati, con rulli e molla, costituiscono l'insieme della
Filiera per la smaltatura di Piattine in Rame e Alluminio*

*4 adjustable basic segments, furnished with rolls and spring, wich are
able to adjust the Enamelling dimensions in the Al and Cu flat wires.*



**Micron S.r.l.
&
M.W.C.**

PORDENONE

Italy

Info:

giorgioferino71@gmail.com

www.micronit.it

Nr Rif.	Articolo/Code	Raggio piatt./ Wire Radius	Pz x Fil./Pieces x Die
1	4335/025	0.50 mm	4
1	4335/032	0.65 mm	4
1	4335/040	0.80 mm	4
1	4335/050	1.00 mm	4

Nr Rif.	Articolo/Code	Passo canali / Pitch@	Prof. Canali / Depht	Pz/Pieces
2	4322/060@	0.35 / 0.50 mm	0.060 mm	4
2	4322/125@	0.35 / 0.50 mm	0.125 mm	4
2	4322/170@	0.35 / 0.50 mm	0.170 mm	4
2	4322/200@	0.35 / 0.50 mm	0.200 mm	4
2	4322/250	0.50 mm	0.250 mm	4
2	4322/300	0.50 mm	0.300 mm	4

Nr Rif.	Descrizione / Description	Articolo / Code	Pz / Pieces
3	Vite non passa / No pass Screw	4331/NP	2
4	Vite passa / Pass Screw	4331/P	2
5	Molla elicoidale C/ Helical Spring C	4335/01	1/2

C Type

Tipo C